

Shandong Jike International Trade Co.,Ltd

- Andy Zuo
- Ph: +8618866930785
- Whatsapp Business:+8618763716998
- Email: andy@jikewood.com
- JIKE INDUSTRY
- Shandong Jike International Trade Co.,Ltd
- Shandong Jike Wood Co.,Ltd
- Shandong Jike Decoration Material Co.,Ltd
- www.jikehomedecor.com
- www.jikewood.com

Wooden slat acoustic panel(Aku panel)

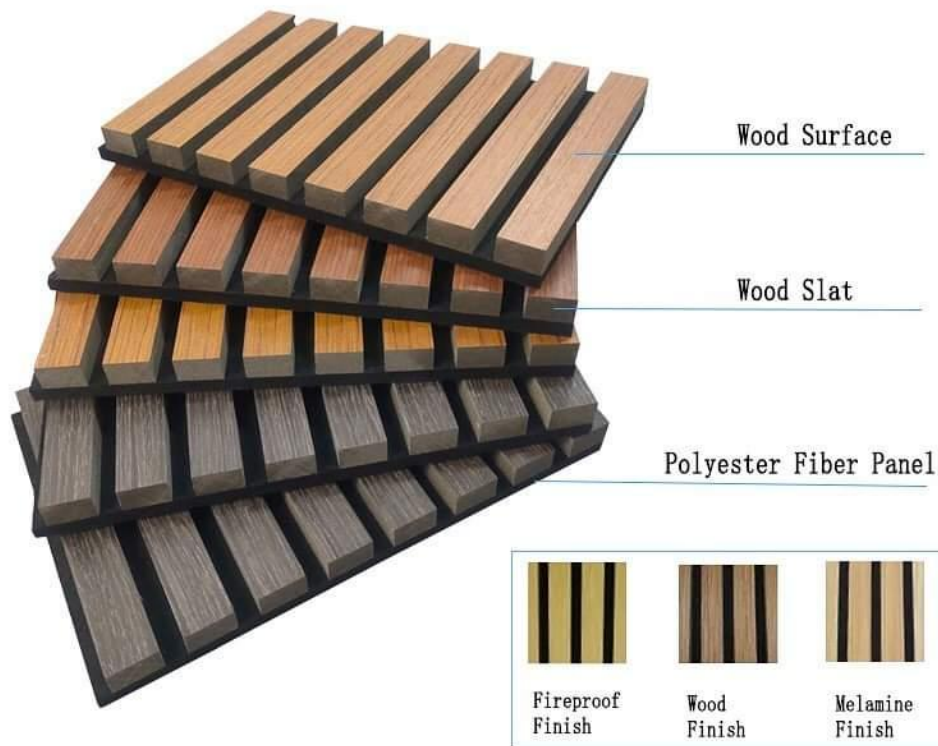


- **Wooden slat panel is made of MDF Panel + 100% polyester fiber panel. It can quickly transform any modern space, enhancing the visual and auditory aspects of the environment. The Acupanel wood panels are made from veneered lamellas on a bottom of a specially developed acoustic felt created from recycled material. The handcrafted panels are not only designed to fit in with the latest trends but are also easy to install on your wall or ceiling. They help to create an environment that is not only quiet but beautifully contemporary, soothing and relaxing**



Material analysis

Material structure display



Size: 3000/2700/2400*1200/600*21mm

MDF Thickness: 12mm/15mm/18mm

Polyester Thickness: 9mm/12mm

Bottom: PET polyester Acupanel wood panels

Basic Material: MDF

Front Finish: Veneer or Melamine

Installation: Glue, wood frame, gun nail

Test: Eco protection, Sound absorption, Fire-retardant

Noise Reduction Coefficient: 0.85-0.94

Fireproof: Class B

Function: Sound absorption / Interior decoration

Application: Qualified for Home/ Musical instrument/
Recording/ Catering/ Commercial/ Office

Veneer Face



Oak



Washed Oak



Walnut



African Ebony



Black Walnut



Wenge

Melamine Face



#01
NATURAL OAK



#02
WASHED OAK



#03
NATURAL LOG



#04
WALNUT



#05
GREY OAK

Product Information



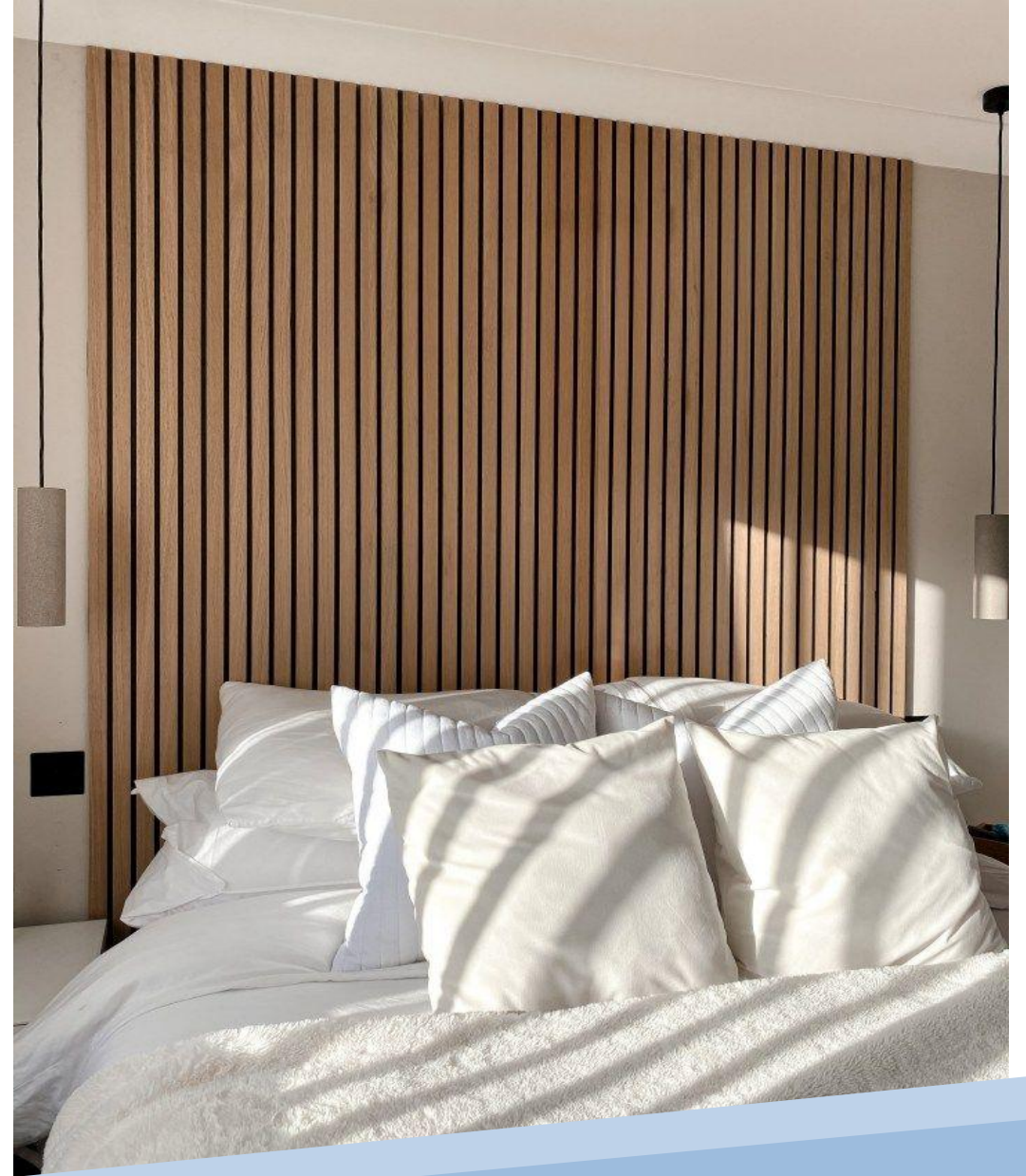
- It is a good acoustic and decorative material with characteristics of environmental friendly, heat insulation, mildew proof, easy cutting, easy removal and simple installation etc. There are varieties of patterns and colors and can be used to meet different styles and requirements

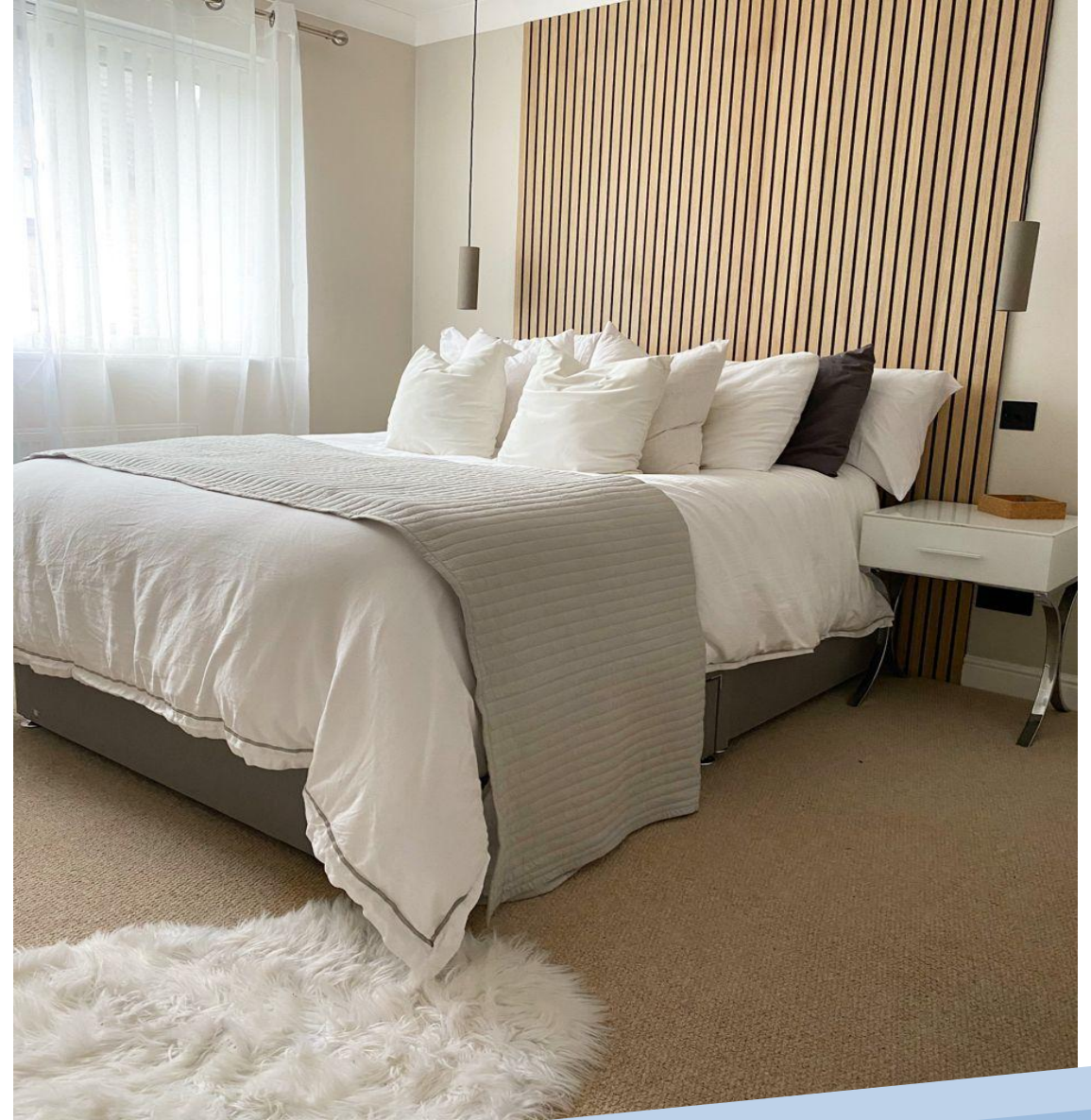


Acupanel Application

- **Wooden slat panel can be widely used on walls and ceilings, in the living room, corridor, kitchen, children's room, bedroom or office. They are also suitable for public communities, shops and restaurants, etc.**



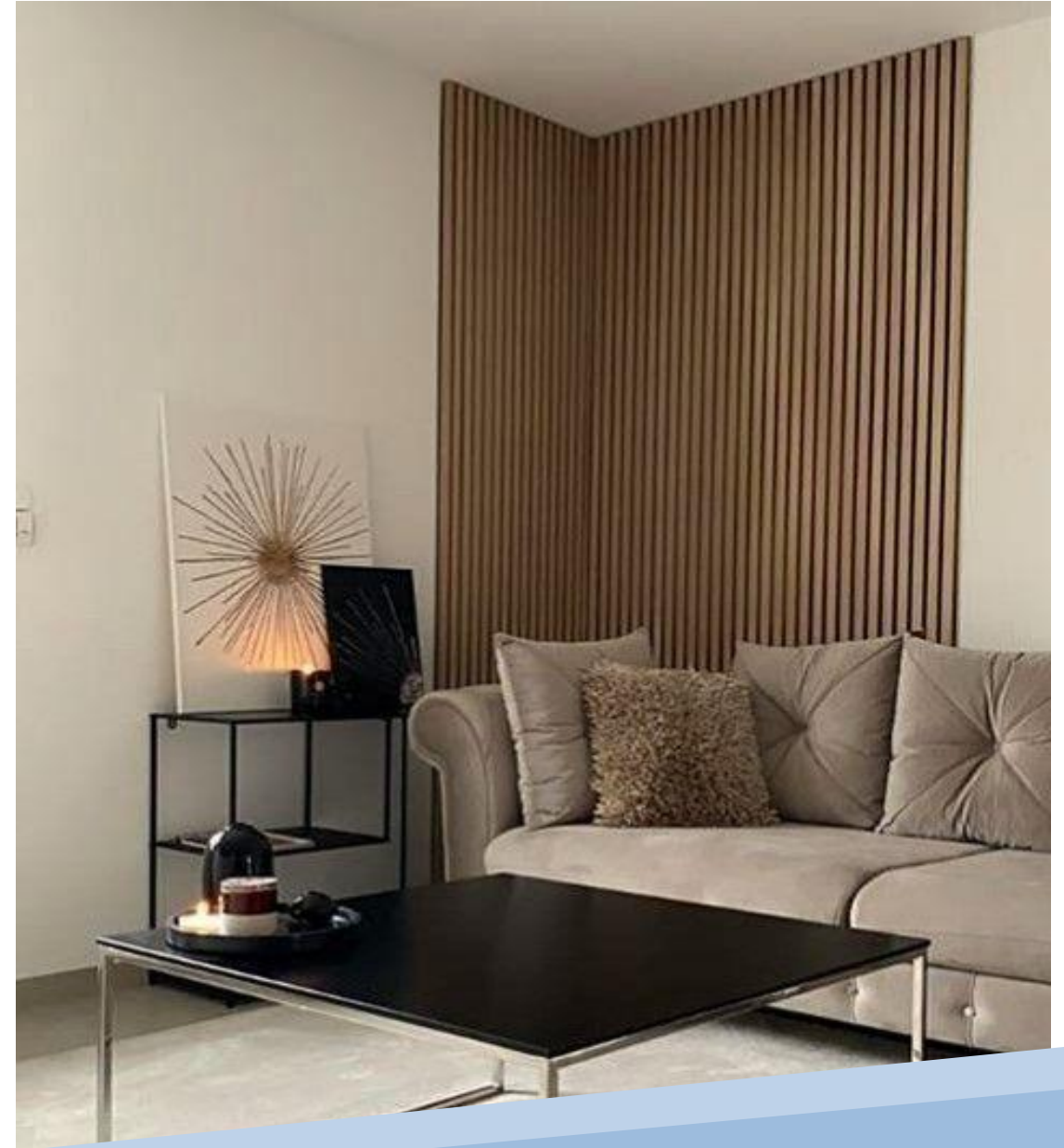






Living room

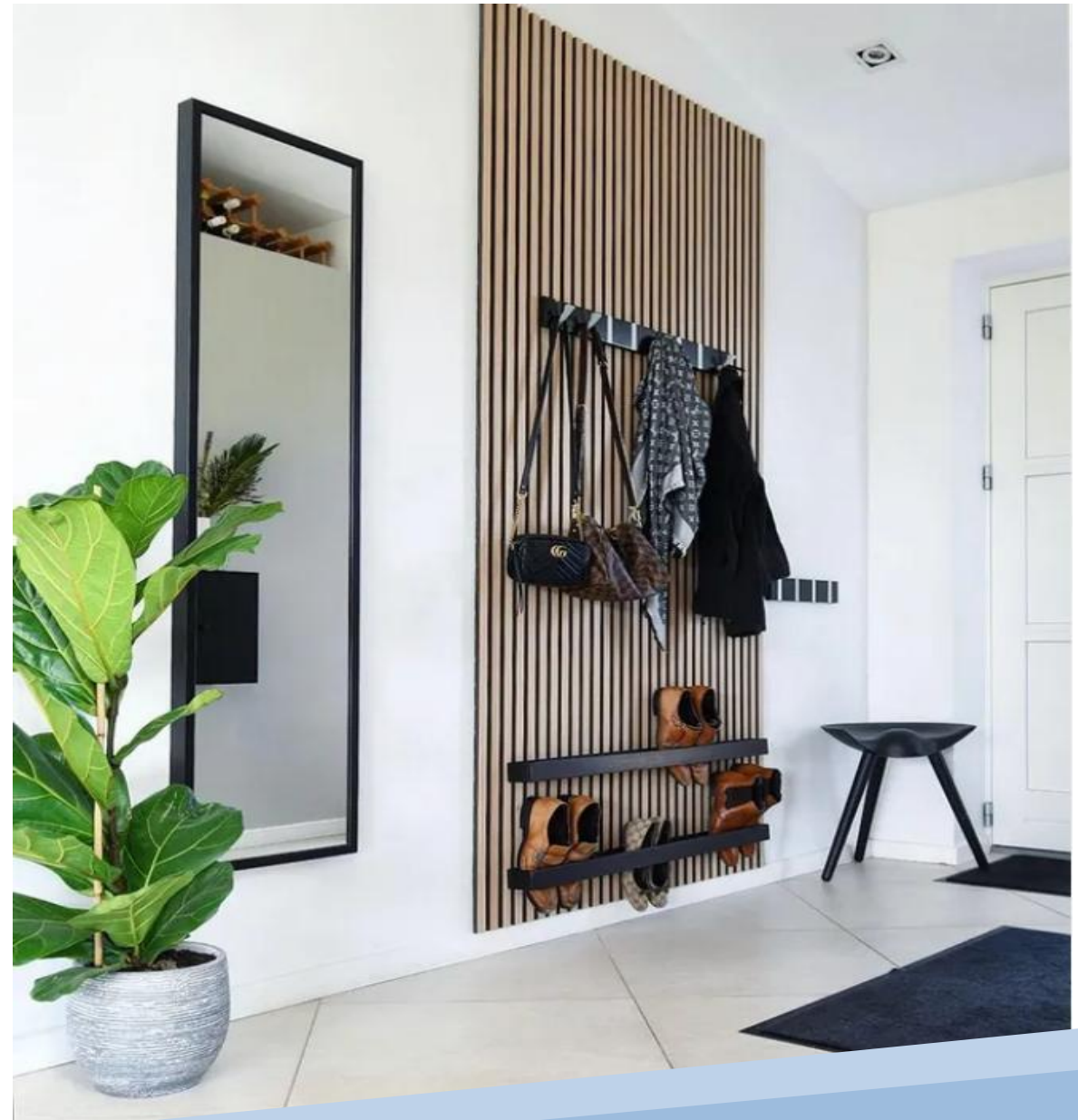


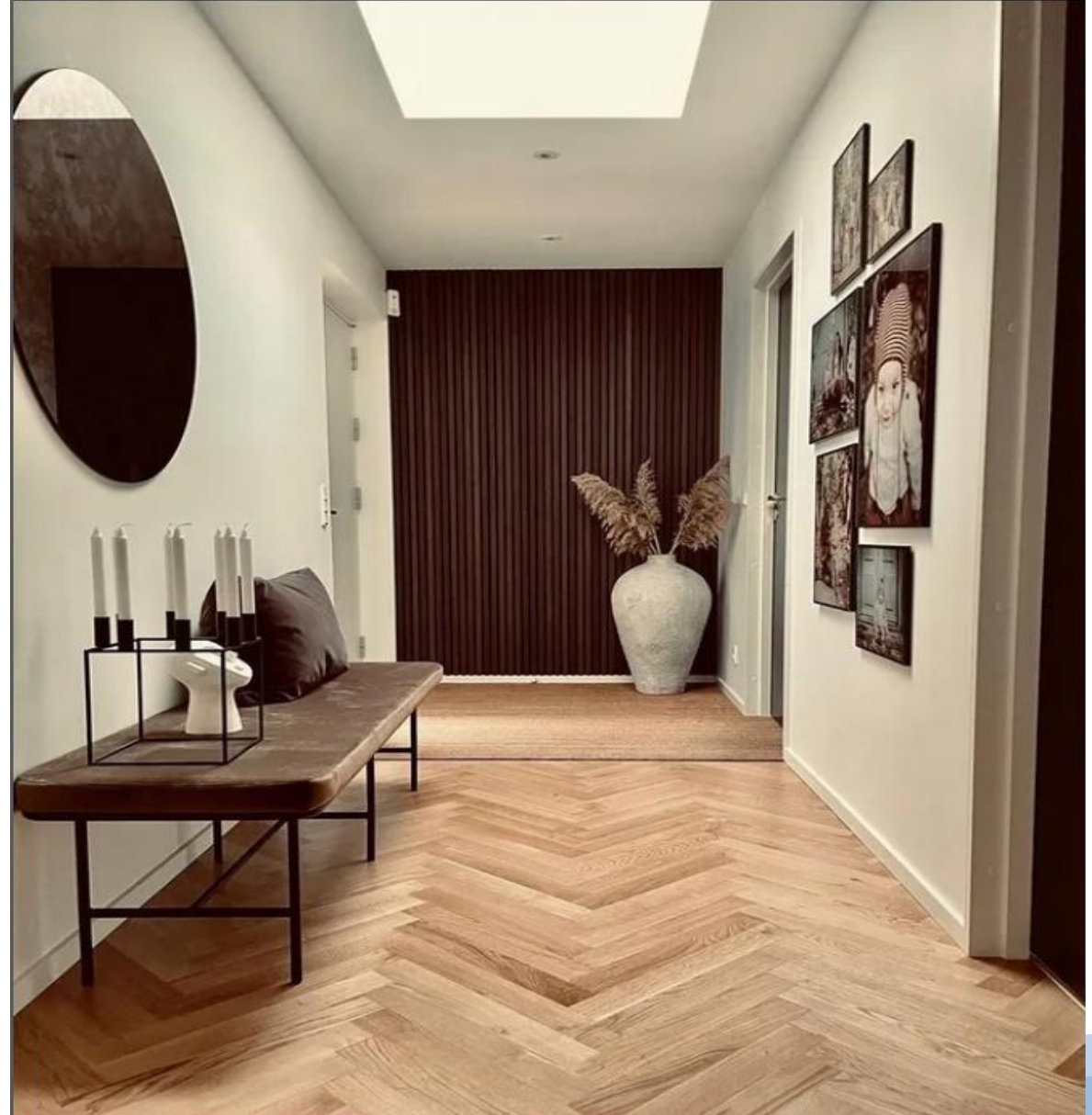


Living room













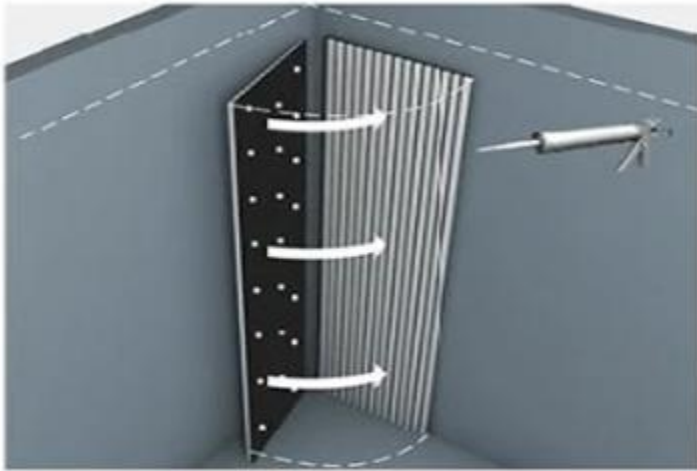


Figure 1



Figure 2

Figure 3

There are three different installation options

1. Directly stick to the wall

Construction glue or grabbing adhesives are recommended for this.

2. Screw directly into the wall:

We recommend using at least 9 screws per panel.

If install to the ceiling, make sure they are screwed into the ceiling keels. For example, if going into drywall, make sure you use the correct fasteners.

3. Screw the panel into the keels:

We recommend installing keels on the wall and then screwing the panels directly into the keels for optimum sound absorption through acoustic properties.



Packing and Delivery

